

Waterproofing system under other coverings

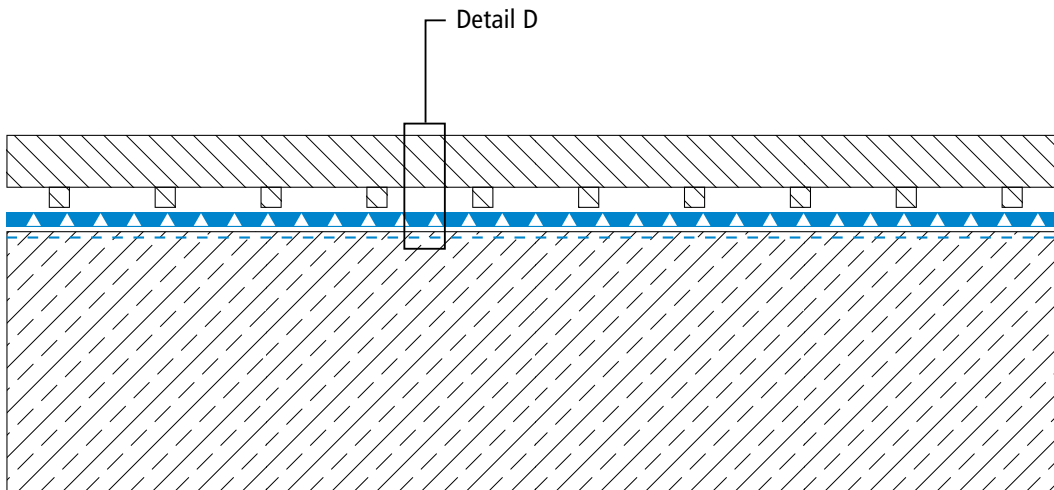
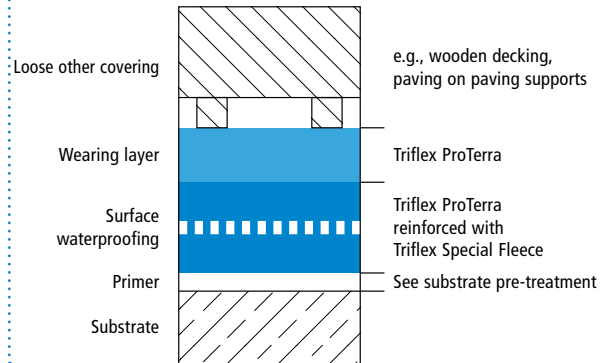
Triflex BWS



System drawings

"Other covering, loose" surface

System design – Detail D



Drawing no.: BWS-2210

Height differences between fleece overlaps are exaggerated

The constructive design details depend on the other covering being applied.

Waterproofing system under other coverings

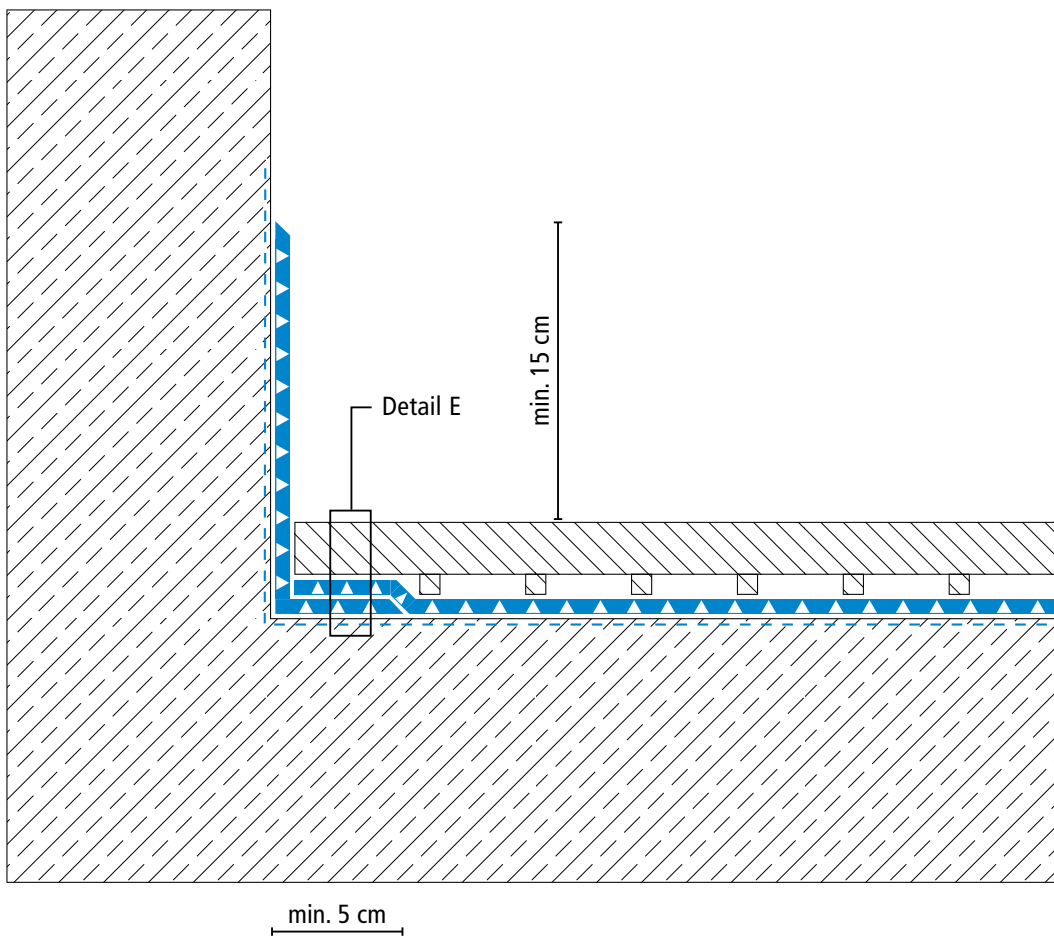
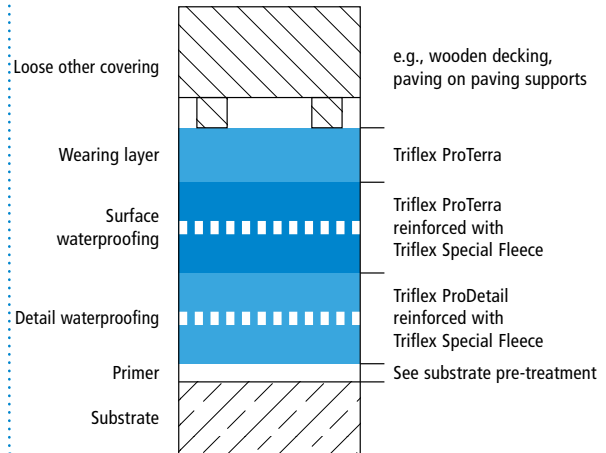
Triflex BWS



System drawings

"Other covering, loose" wall junction

System design – Detail E



Drawing no.: BWS-2211

Height differences between fleece overlaps are exaggerated

The constructive design details depend on the other covering being applied.



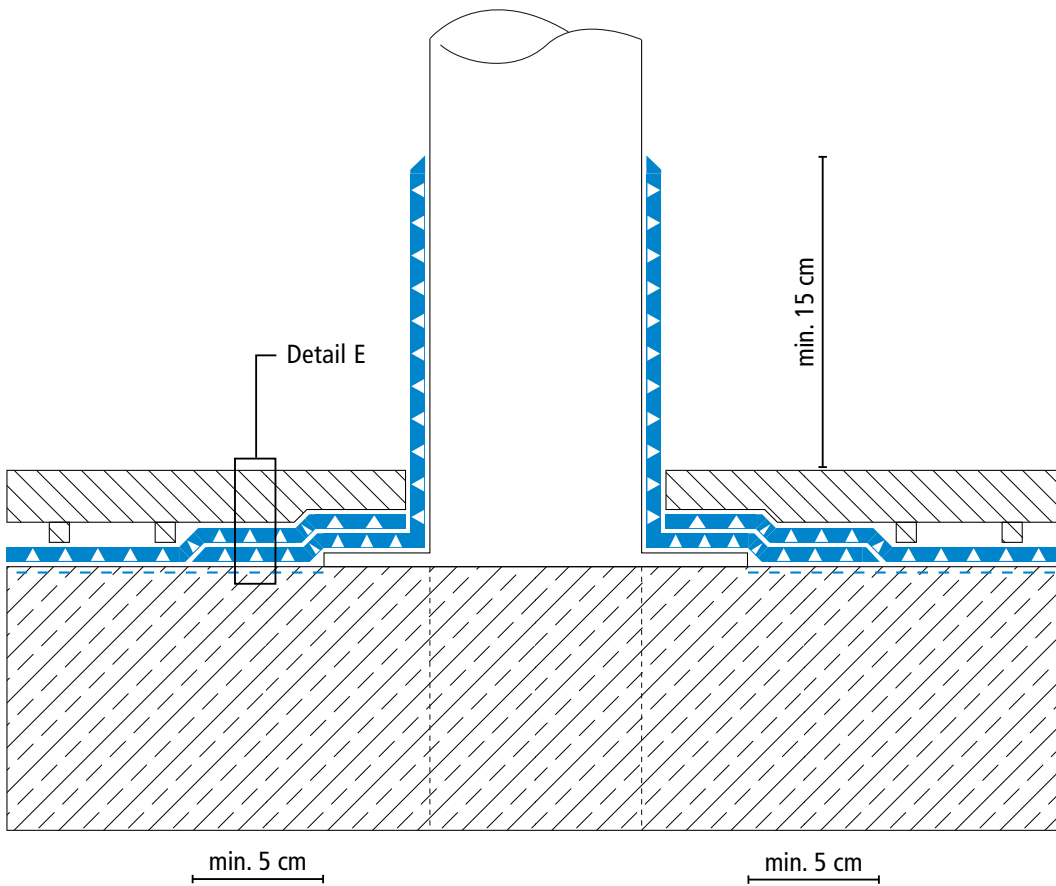
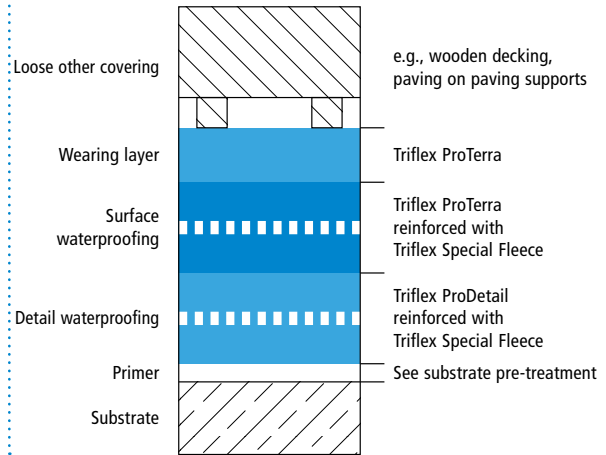
Waterproofing system under other coverings

Triflex BWS

System drawings

"Other covering, loose" prop connector / penetration

System design – Detail E



Drawing no.: BWS-2212

Height differences between fleece overlaps are exaggerated

The constructive design details depend on the other covering being applied.

Waterproofing system under other coverings

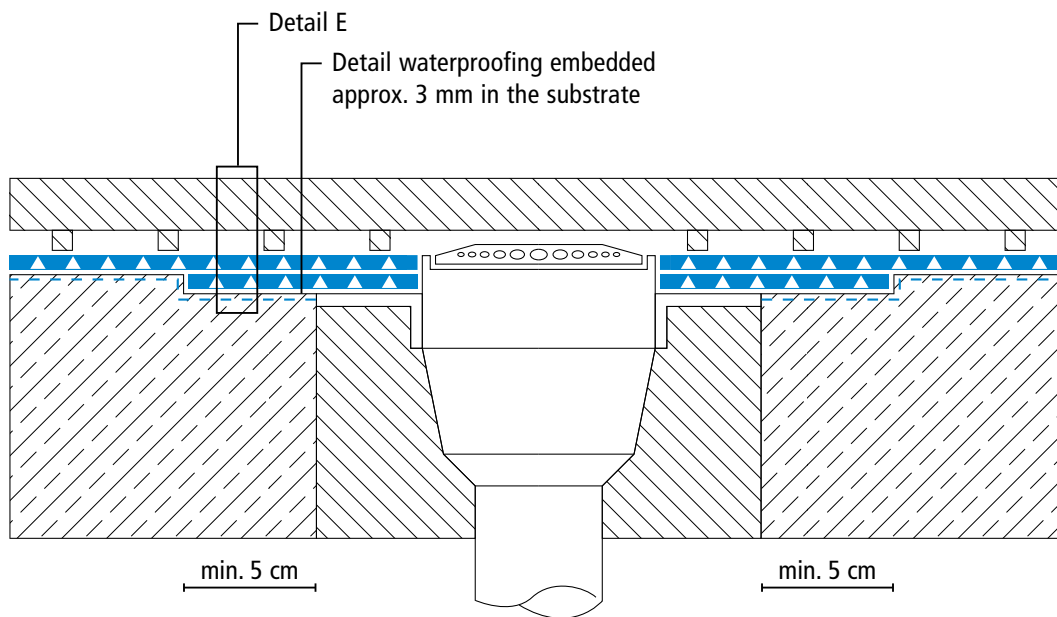
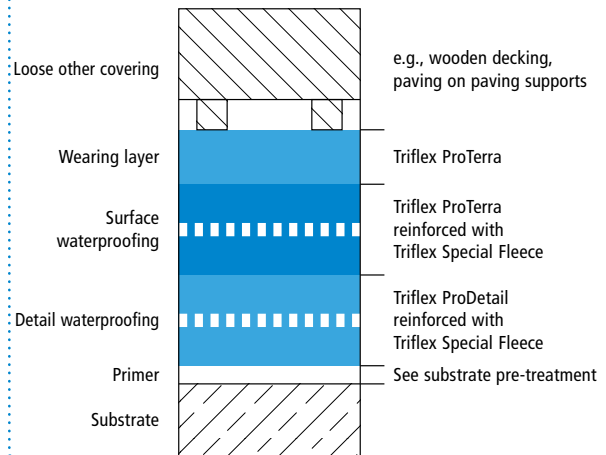
Triflex BWS



System drawings

"Other covering, loose" gully

System design – Detail E



Drawing no.: BWS-2213

Height differences between fleece overlaps are exaggerated

The constructive design details depend on the other covering being applied.

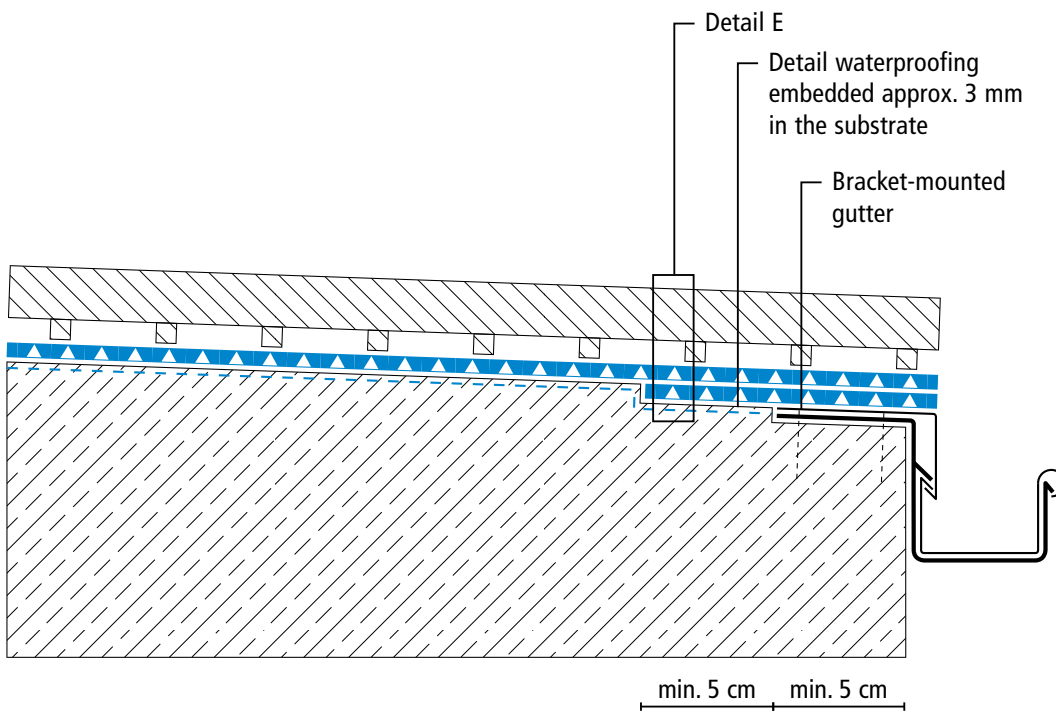
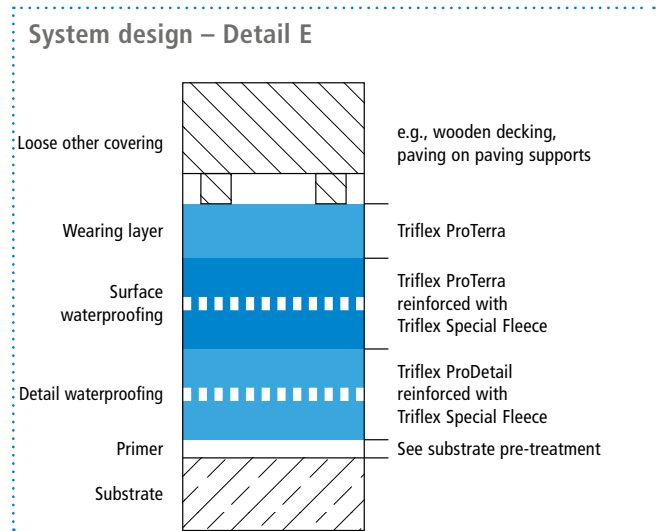
Waterproofing system under other coverings

Triflex BWS



System drawings

"Other covering, loose" leading edge with bracket-mounted gutter



Drawing no.: BWS-2214

Height differences between fleece overlaps are exaggerated

The constructive design details depend on the other covering being applied.

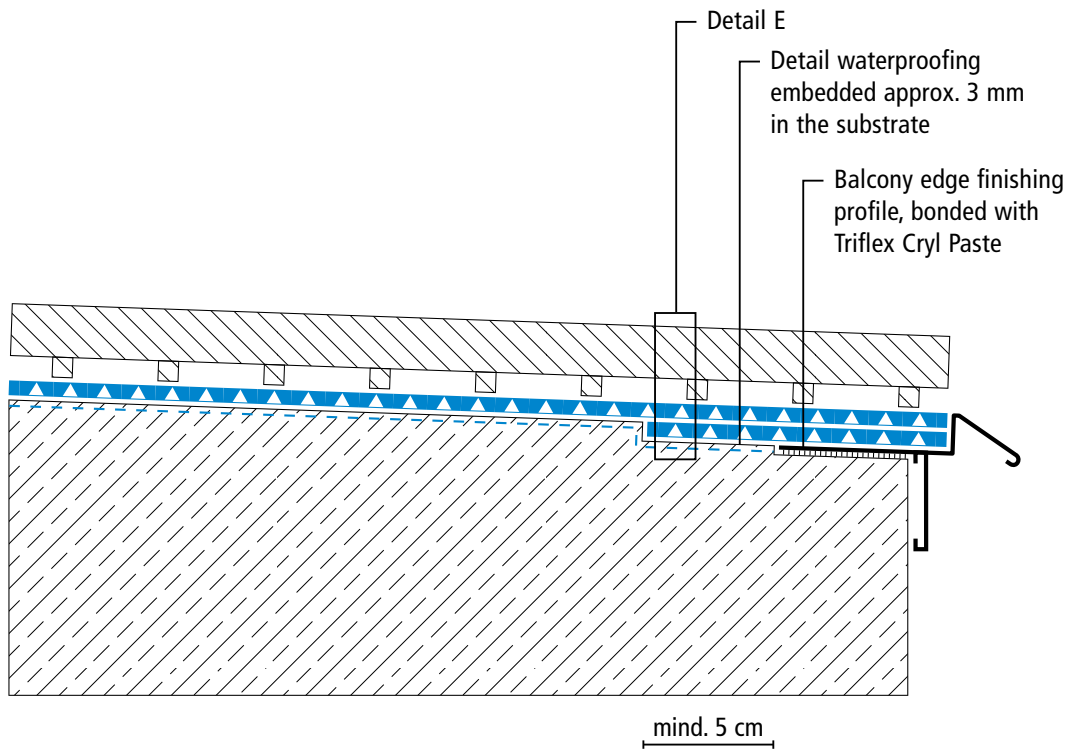
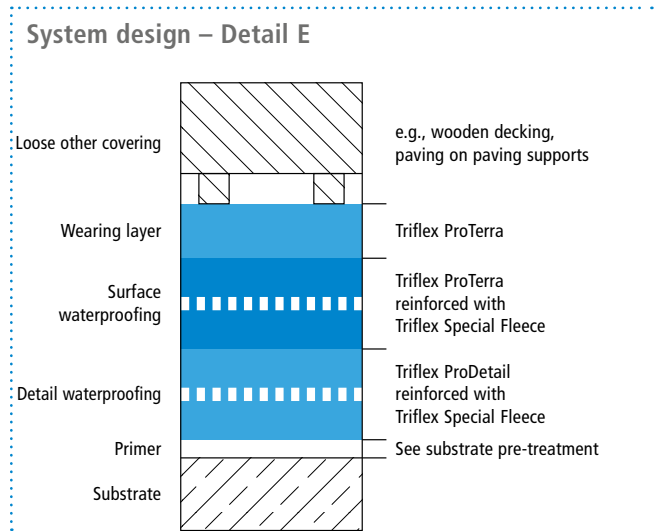


Waterproofing system under other coverings

Triflex BWS

System drawings

"Other covering, loose" leading edge with edge finishing profile



Drawing no.: BWS-2215

Height differences between fleece overlaps are exaggerated

The constructive design details depend on the other covering being applied.

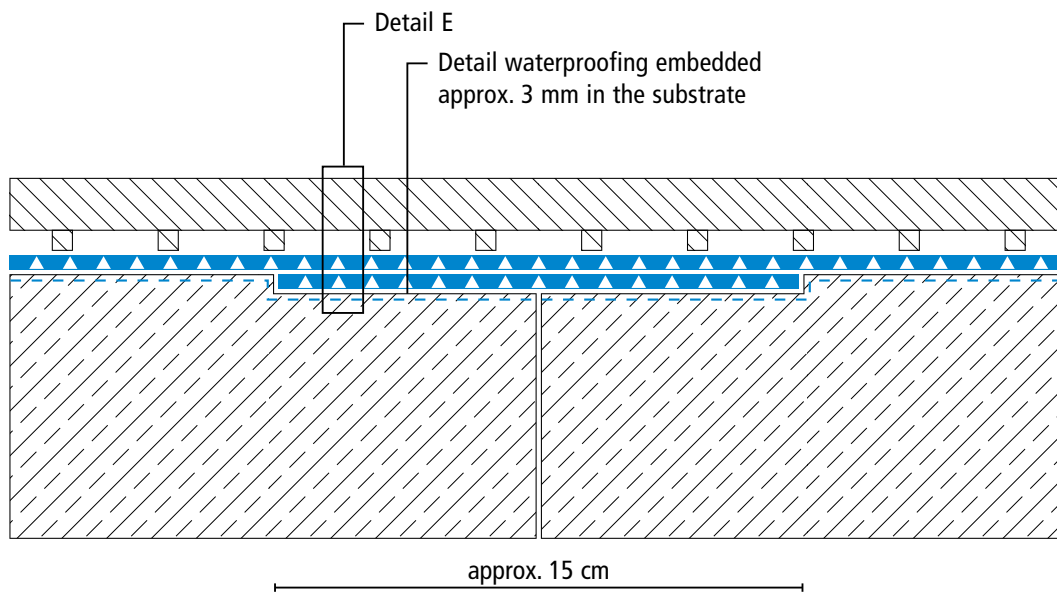
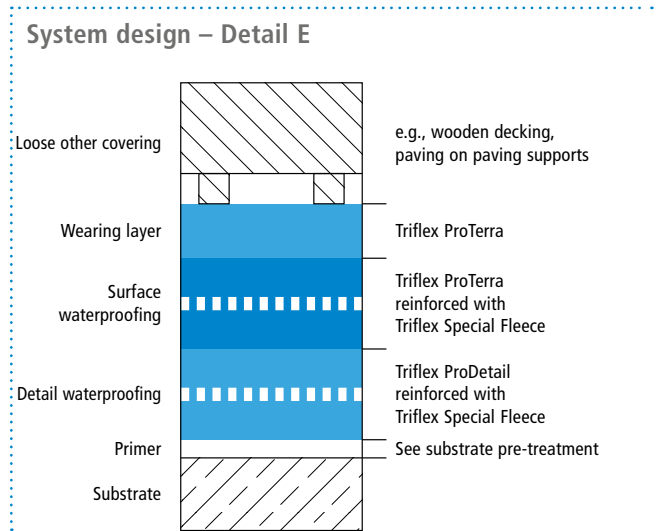


Waterproofing system under other coverings

Triflex BWS

System drawings

"Other covering, loose" construction joint



Drawing no.: BWS-2216

Height differences between fleece overlaps are exaggerated

The constructive design details depend on the other covering being applied.

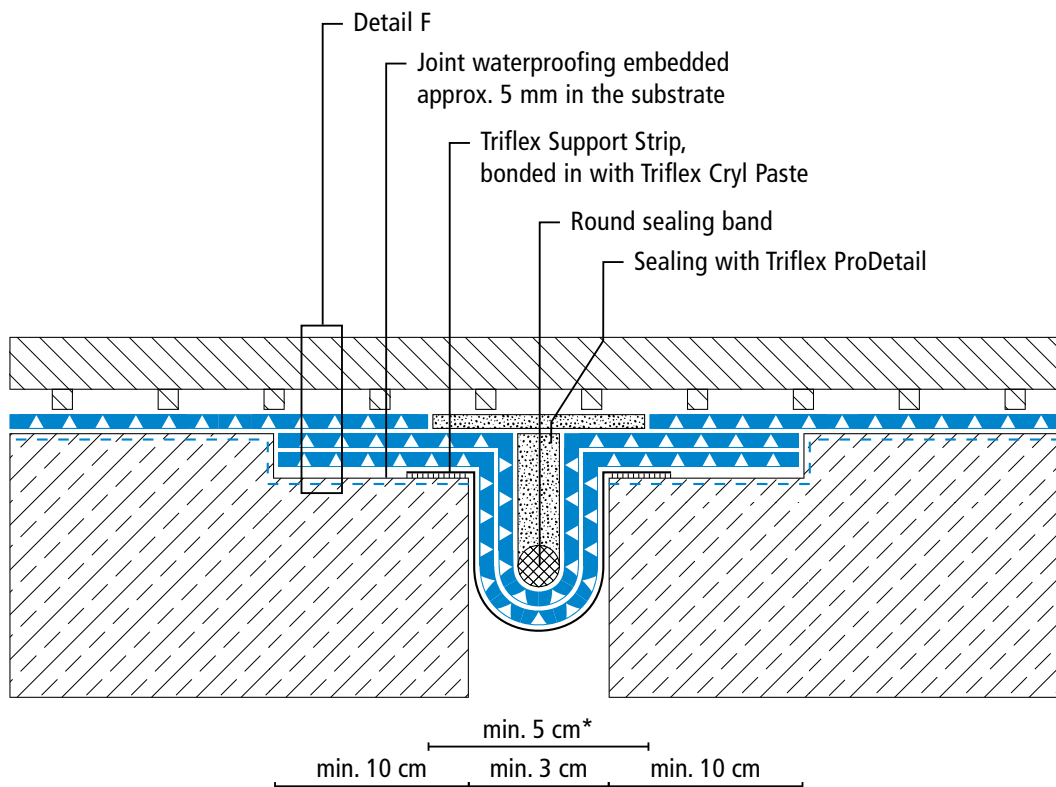
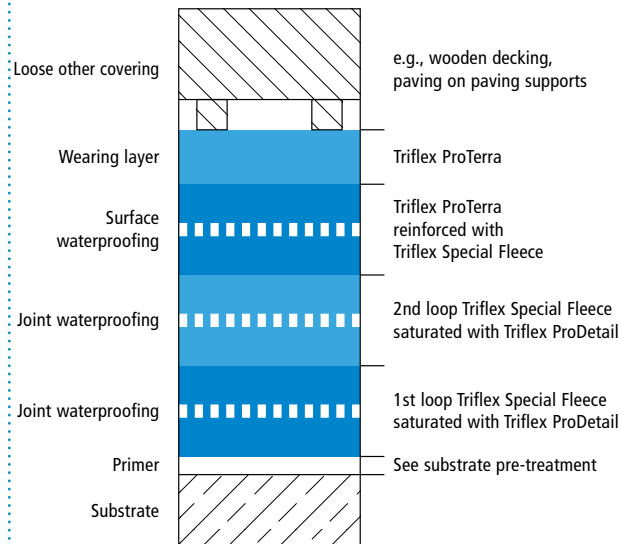
Triflex BWS



System drawings

"Other covering, loose" settlement joint surface

System design – Detail F



Drawing no.: BWS-2217

* Omission of surface waterproofing and wearing layer (see system description)

Height differences between fleece overlaps are exaggerated

The constructive design details depend on the other covering being applied.

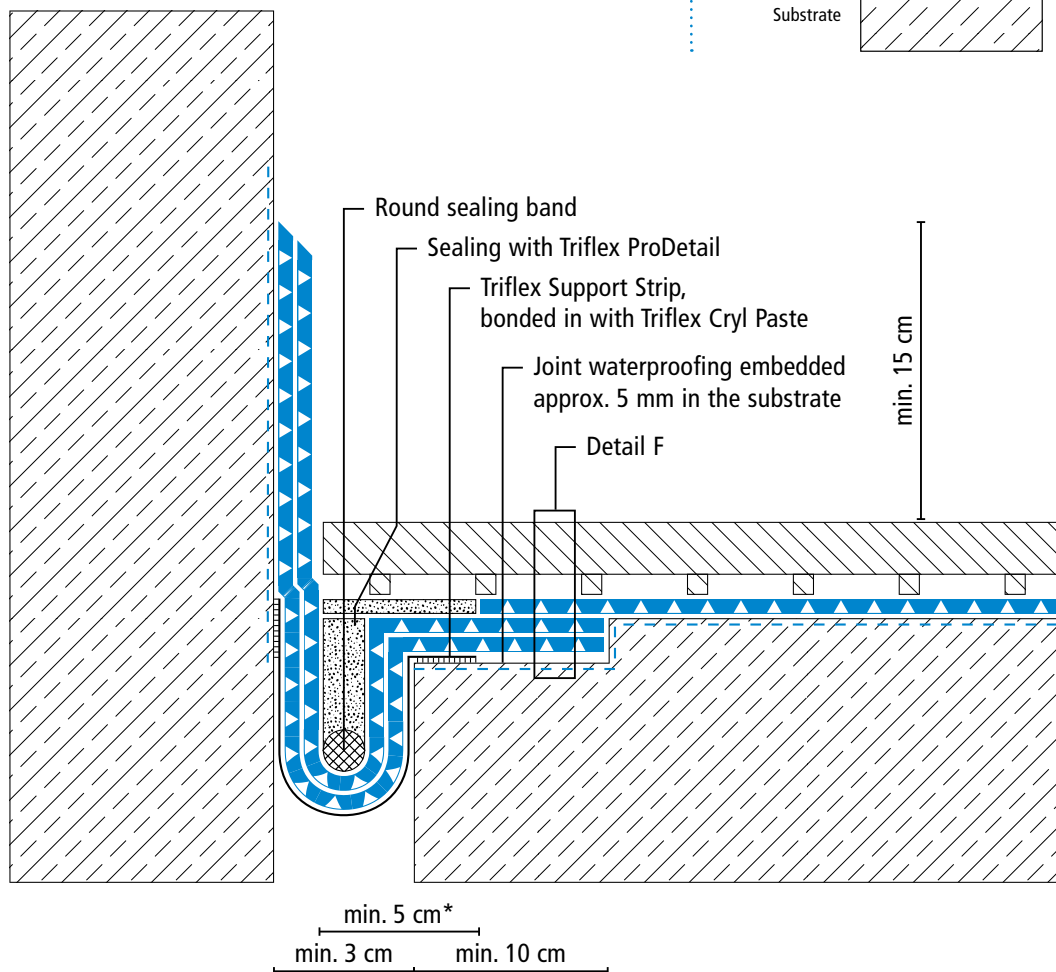
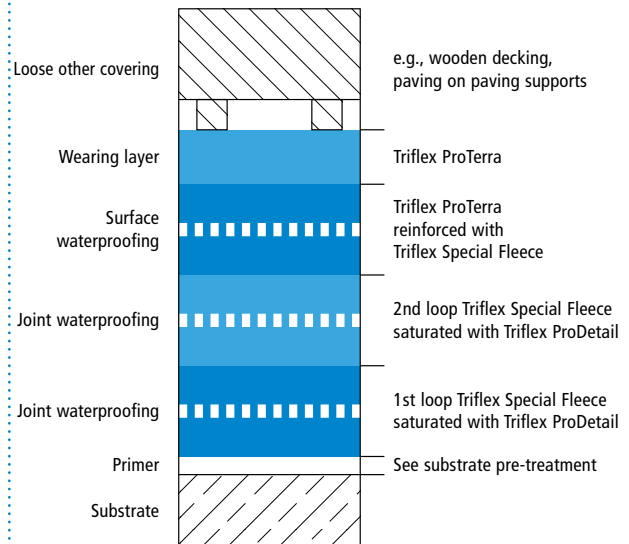
Triflex BWS



System drawings

"Other covering, loose" settlement joint – wall junction

System design – Detail F



Drawing no.: BWS-2218

* Omission of surface waterproofing and wearing layer (see system description)

Height differences between fleece overlaps are exaggerated

The constructive design details depend on the other covering being applied.